

PROPRIETARY NOTICE

NOTICE IS HEREBY GIVEN THAT THIS DOCUMENT EMBODIES A CONFIDENTIAL PROPRIETARY DESIGN OR IS PART OF A CONFIDENTIAL PROPRIETARY DESIGN ORIGINATED BY OURSELVES OR ONE OF OUR CUSTOMERS, AND ALL DESIGN, MANUFACTURING, PREPRODUCTION USE AND SALE RIGHTS REGARDING THE SAME ARE EXPRESSLY RESERVED. IT IS SUBMITTED UNDER A CONFIDENTIAL RELATIONSHIP FOR A SPECIFIC PURPOSE, AND THE RECIPIENT BY ACCEPTING THIS DRAWING AGREES NOT TO SUPPLY OR DISCLOSE ANY INFORMATION REGARDING IT TO ANY UNAUTHORIZED PERSON, OR TO INCORPORATE IN OTHER PROJECTS, ANY SPECIAL FEATURES PECULIAR TO THIS DESIGN.


REVISION HISTORY				
REV	LOC	DESCRIPTION	DATE	APPV'D
B1	A6	CHANGED LENGTH OF BOTTOM "FEET" TO MATCH LENGTH OF TOP "FEET" -> RESULT IS LOSS OF 0.50mm OF MAIN BODY HEIGHT.	09/01/2003	AWR
B1	D3	ADDED SPRING PLUNGER CALLOUT	09/01/2003	AWR
B2	B4	ADDED SURFACE CALLOUT TO RAILS	09/26/2003	AWR

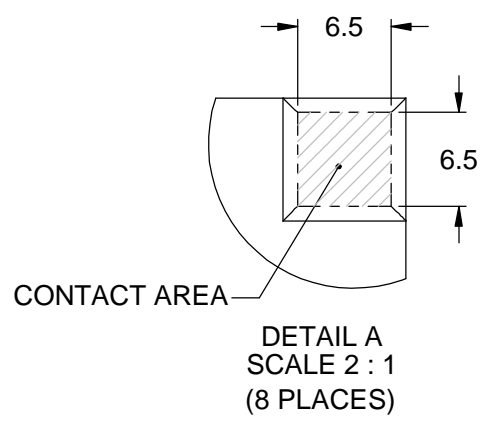
2X SST STUBBY SPRING LOADED DELRIN NOSE WITH LOCKING ELEMENT VLIER P/N SSMD-51A (8-32 THREAD)
INITIAL FORCE = .50 lbs (225 grams)
FINAL FORCE = 1.5 lbs (680 grams)

DEPLOYMENT DETECTION SWITCH (1 REQUIRED)
REMOVE-BEFORE-FLIGHT PIN ACCESS AREA
OPTIONAL DATA PORT ACCESS AREA

HATCHED AREAS ON ALL SIDES (SIX) REPRESENTS OPTIONAL EXTERNAL MOUNTING AREA. MAX HEIGHT FROM HATCHED SURFACE IS 6.5mm

The Pumpkin CubeSat Kit is a joint venture between Design Massif and Pumpkin, Inc. All correspondence regarding mechanical issues are to be directed to Design Massif. All other correspondence regarding electrical/electronic components, software, programming, service and billing should be directed to Pumpkin, Inc.

MATERIAL:	FINISH:	HEAT TREAT:	WEIGHT:
		750 Naples - San Francisco - CA 94112 (415) 584-6360 ph - (415) 585-7948 fax info@pumpkininc.com	
UNLESS OTHERWISE SPECIFIED DIMENSIONS ARE IN MILLIMETERS TOLERANCES ARE:		APPROVALS	DATE
FRACTIONS DECIMALS ANGLES		DRAWN AWR	02/07/03
X. = ± .50 .X = ± .25 ± 0° 30" .XX = ± .10		CHECKED	
CAD GENERATED DRAWING, DO NOT MANUALLY UPDATE		QUAL ENG	
DO NOT SCALE DRAWING		TITLE CubeSat, Control Document	
		SIZE B	DWG. 810-00252
		SCALE 2:3	REV B2
		SHEET 1 OF 1	

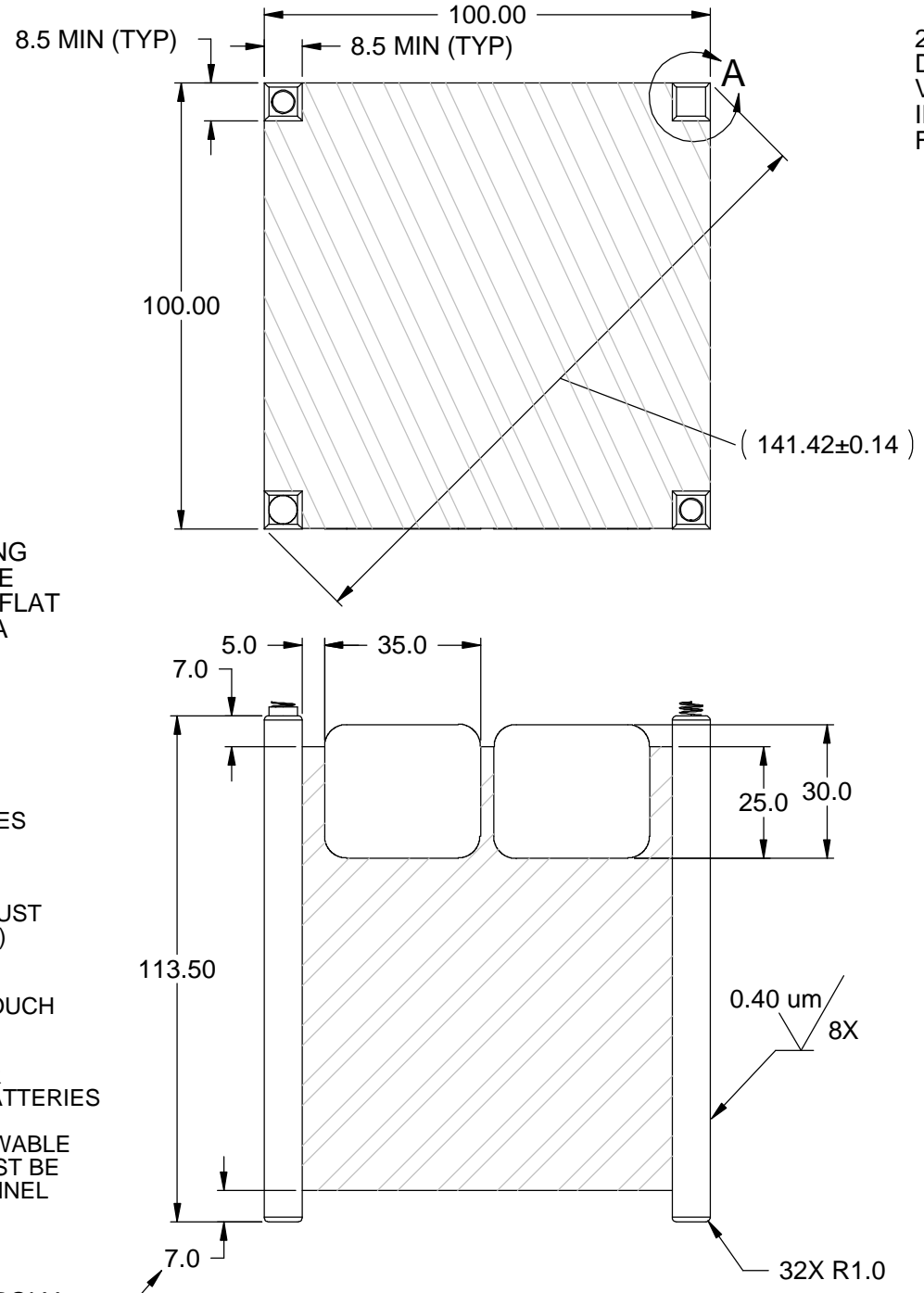


NOTE: NEIGHBORING SATELLITE SPRING AND SWITCH CONTACT AREAS MUST BE ACCOMMODATED WITH THE MINIMUM FLAT CONTACT AREA AS SHOWN IN DETAIL-A

CubeSat NOTES:

- 1) REMOVE ALL BURRS AND BREAK SHARP EDGES
- 2) ROUND ALL EDGES (1mm SUGGESTED)
- 3) RAIL SURFACES (8X) AND ENDS OF RAILS (8) MUST BE ANODIZED (HARD ANODIZE IS PREFERRED) TO PREVENT COLD WELDING OF SURFACES
- 4) NO EXTERNAL OBJECTS ON CUBESAT MAY TOUCH INTERNAL SURFACES OF THE P-POD
- 5) MUST HAVE REMOVE BEFORE-FLIGHT PIN, OR LAUNCH WITH COMPLETELY DISCHARGED BATTERIES
- 6) CAL-POLY HAS FINAL DECISION ON ALL ALLOWABLE CUBESAT DESIGNS AND ANY DEVIATIONS MUST BE DISCUSSED WITH CAL-POLY LAUNCH PERSONNEL

NOTE THAT THE ORIGINAL CAL-POLY CUBESAT SPECIFICATION DRAWING SHOWS 6.5mm FOR THIS DIMENSION



design MASSIF
P.O. Box 800 - Mt. Aukum - CA 95656
(530) 620-6402 ph - (530) 620-6403 fax
massif@designmassif.com