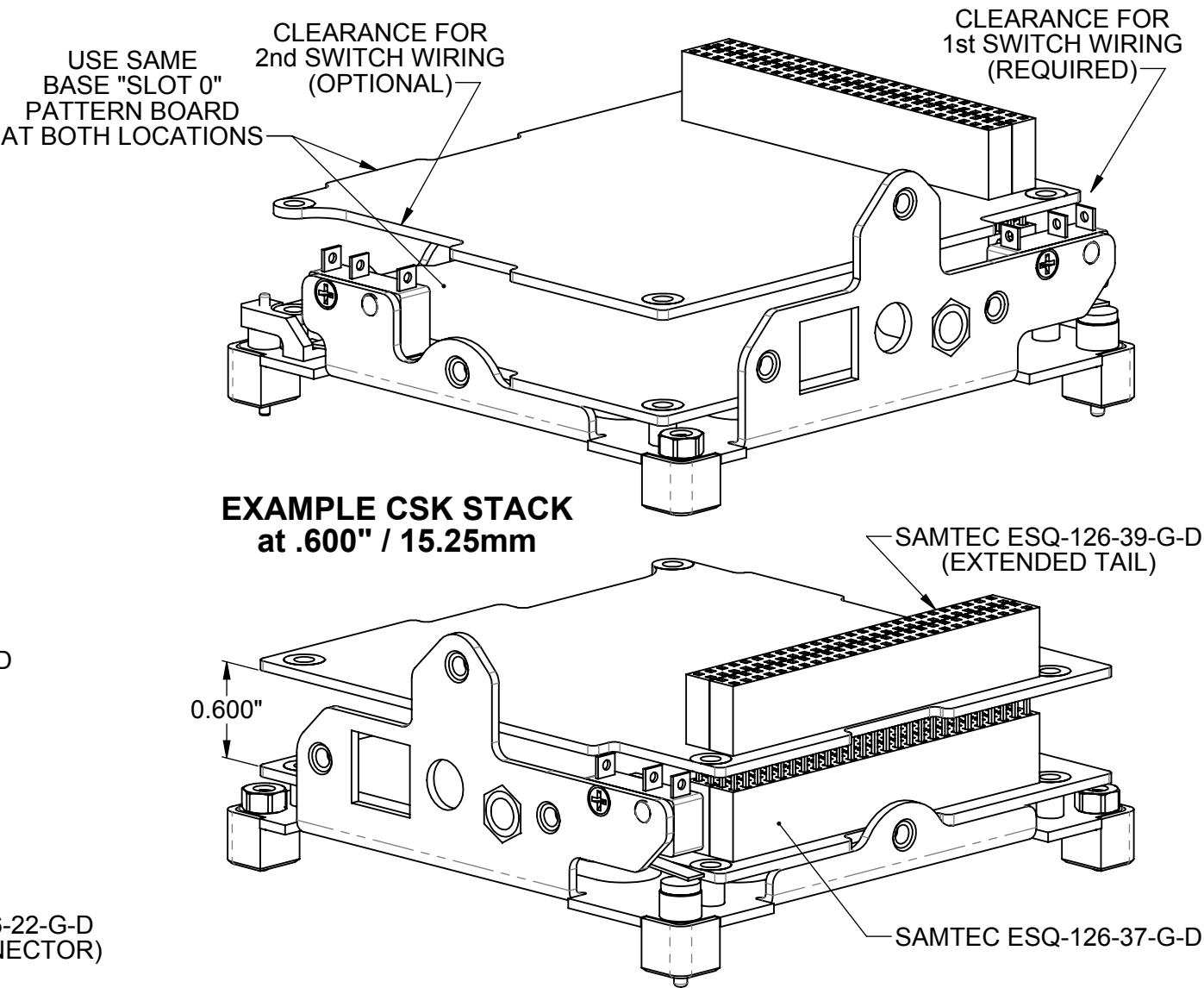
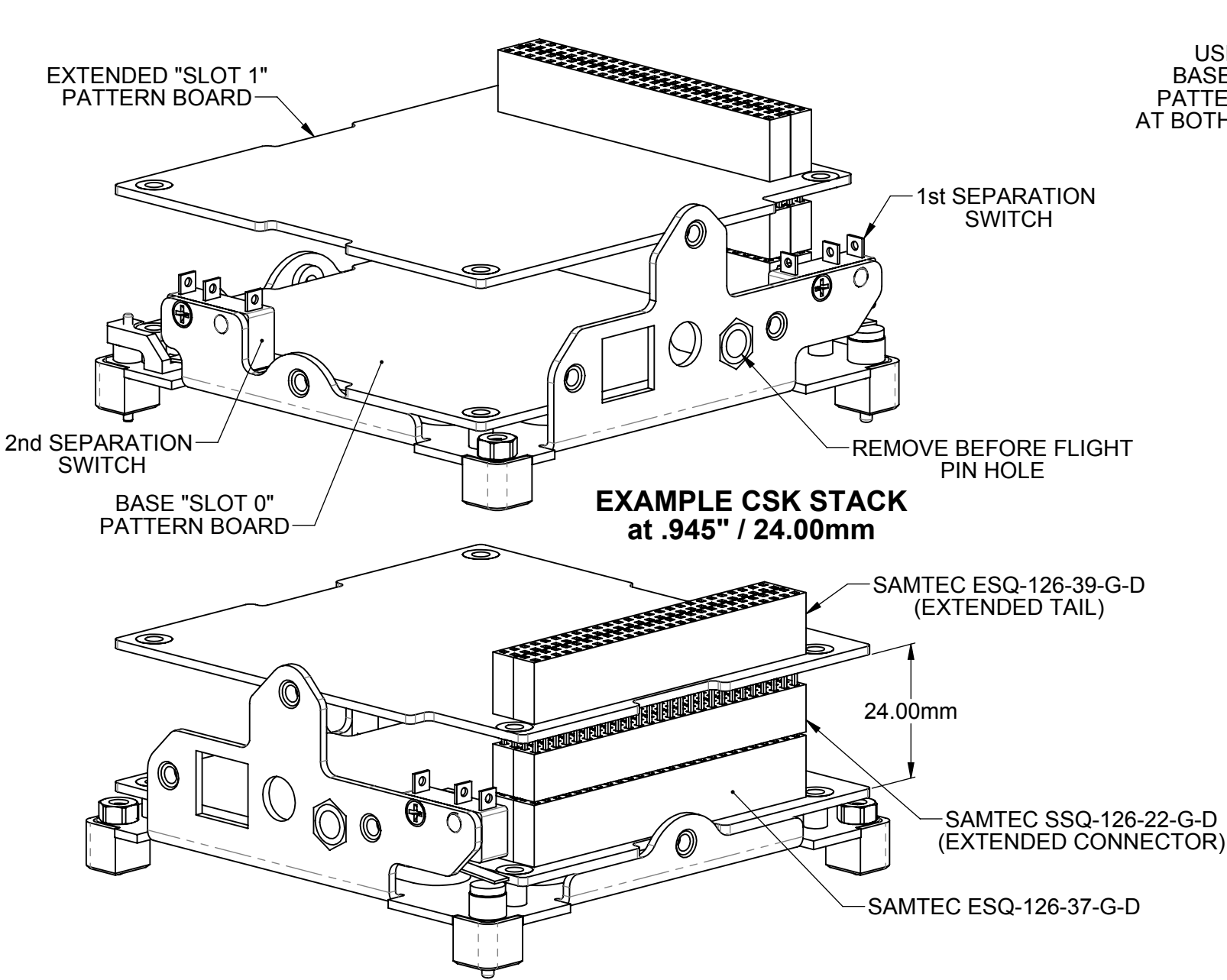


PROPRIETARY NOTICE

NOTICE IS HEREBY GIVEN THAT THIS DOCUMENT EMBODIES A CONFIDENTIAL PROPRIETARY DESIGN OR IS PART OF A CONFIDENTIAL PROPRIETARY DESIGN ORIGINATED BY OURSELVES OR ONE OF OUR CUSTOMERS, AND ALL DESIGN, MANUFACTURING, PREPRODUCTION USE AND SALE RIGHTS REGARDING THE SAME ARE EXPRESSLY RESERVED. IT IS SUBMITTED UNDER A CONFIDENTIAL RELATIONSHIP FOR A SPECIFIC PURPOSE, AND THE RECIPIENT BY ACCEPTING THIS DRAWING AGREES NOT TO SUPPLY OR DISCLOSE ANY INFORMATION REGARDING IT TO ANY UNAUTHORIZED PERSON, OR TO INCORPORATE IN OTHER PROJECTS, ANY SPECIAL FEATURES PECULIAR TO THIS DESIGN.

REVISION HISTORY

REV	LOC	DESCRIPTION	DATE	APP'VD
		SEE SHEET #6		



NOTES: THE PUMPKIN CUBESAT KIT BOARD-TO-BOARD STACKING OCCURS AT TWO POSSIBLE DISTANCES:
#1 BETWEEN 15.24mm (.600") TO 17.00mm, OR
#2 BETWEEN 24.00mm AND 26.00mm

SPACING BOARDS AT #2 DISTANCE REQUIRES USE OF ADDITIONAL SAMTEC CONNECTOR TO SPAN THE GAP.

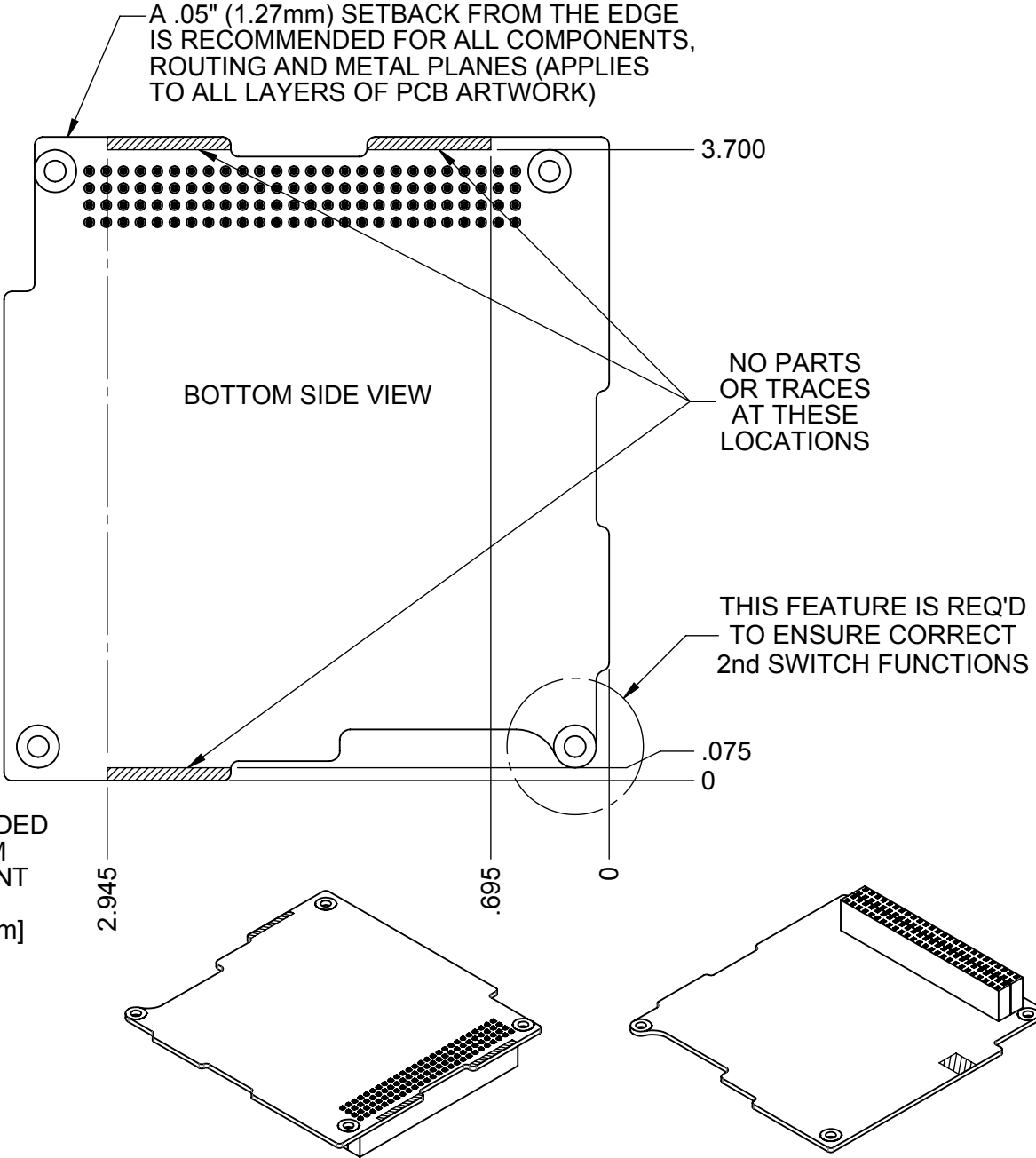
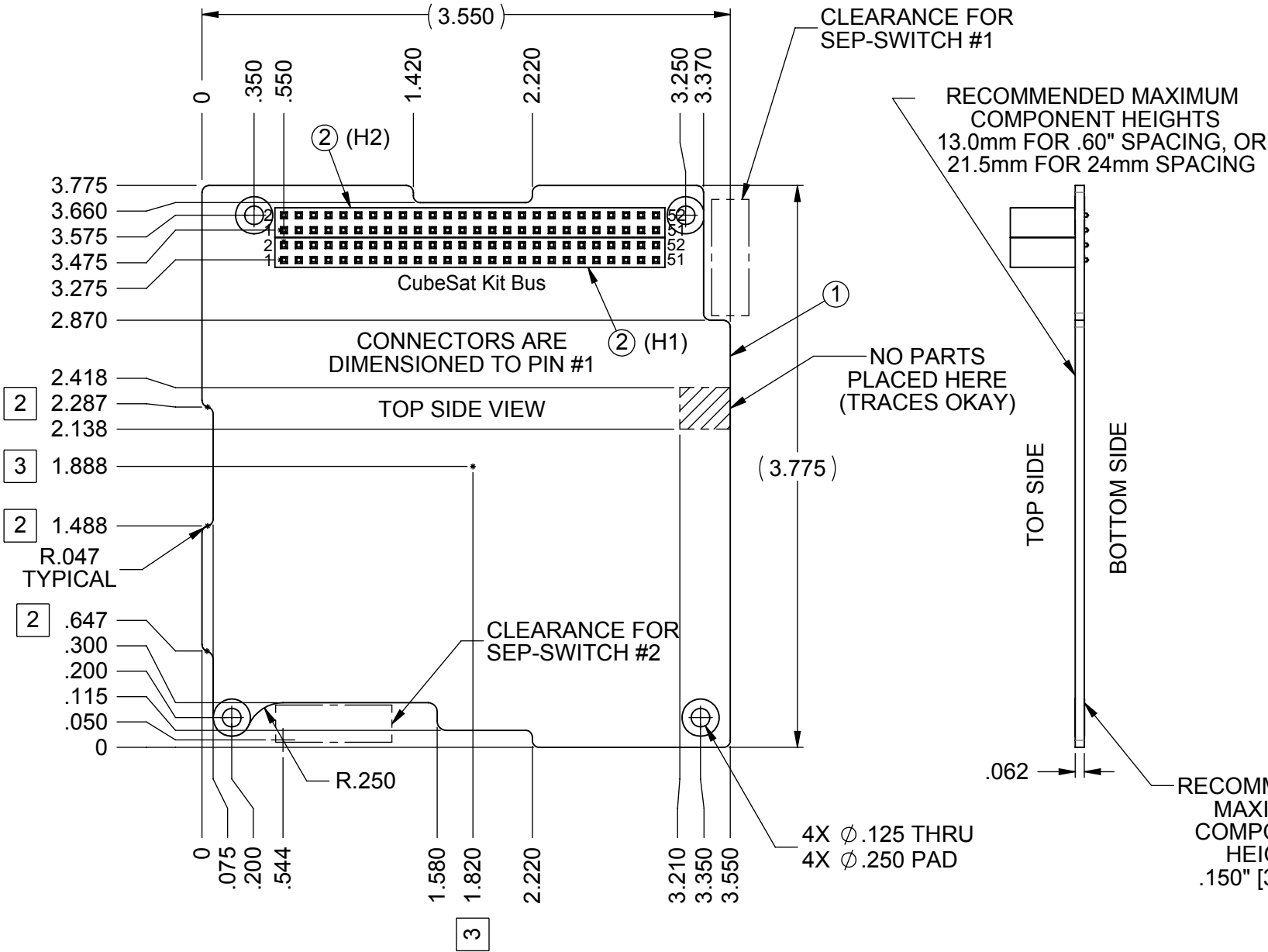
NOMINALLY, PUMPKIN STANDARD SPACERS SUPPORT 15.24mm & 24.00mm OAL.

DO NOT EXCEED RECOMMENDED MAXIMUM DISTANCE SPEC'D.

SAMTEC PART NUMBERS LISTED ARE FOR LOW INSERTION FORCE VERSION.

MATERIAL: SEE NOTES		FINISH: SEE NOTES		HEAT TREAT: NONE		WEIGHT:	
				750 Naples - San Francisco - CA 94112 (415) 584-6360 ph - (415) 585-7948 fax info@pumpkininc.com			
UNLESS OTHERWISE SPECIFIED DIMENSIONS ARE IN INCHES TOLERANCES ARE: FRACTIONS DECIMALS ANGLES .X = ± .030 .XX = ± .010 ± 0° 30" .XXX = ± .005		APPROVALS		DATE		TITLE CubeSat Kit PCB Specification SIZE B DWG. 810-00253 REV B2	
		DRAWN AWR		09/26/03			
		CHECKED AWR		08/20/18			
CAD GENERATED DRAWING, DO NOT MANUALLY UPDATE		DO NOT SCALE DRAWING		11/07/18		SCALE : NONE SHEET 1 OF 6	

REVISION HISTORY				
REV	LOC	DESCRIPTION	DATE	APP'VD
		SEE SHEET #6		AWR



ITEM	QTY	PART NUMBER	DESCRIPTION	MANUFACTURER
1	1	SLOT 0 SPEC PCB	USER	USER
2	2	ESQ-126-37-G-D	2x26 NON-STACK-THRU	SAMTEC

NOTES: THE FEATURES ON THIS PAGE ARE FOR "SLOT 0" USER MODULES MOUNTED TO A PUMPKIN CubeSat Kit 2-SWITCH BASEPLATE ASSEMBLY.

1) CONNECTORS SHOWN ARE .10" x .10" SPACING, WITH .025" SQUARE PINS.

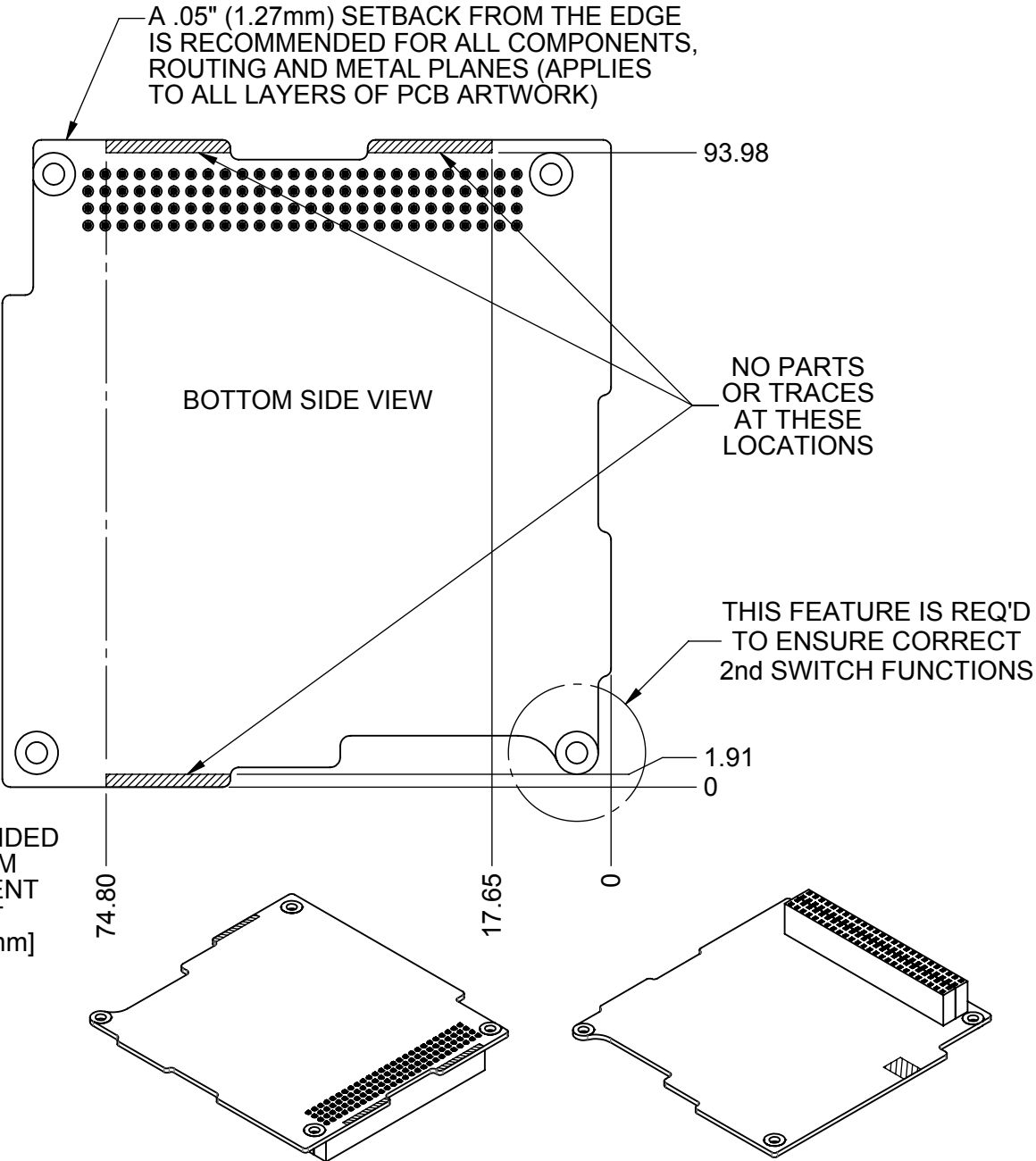
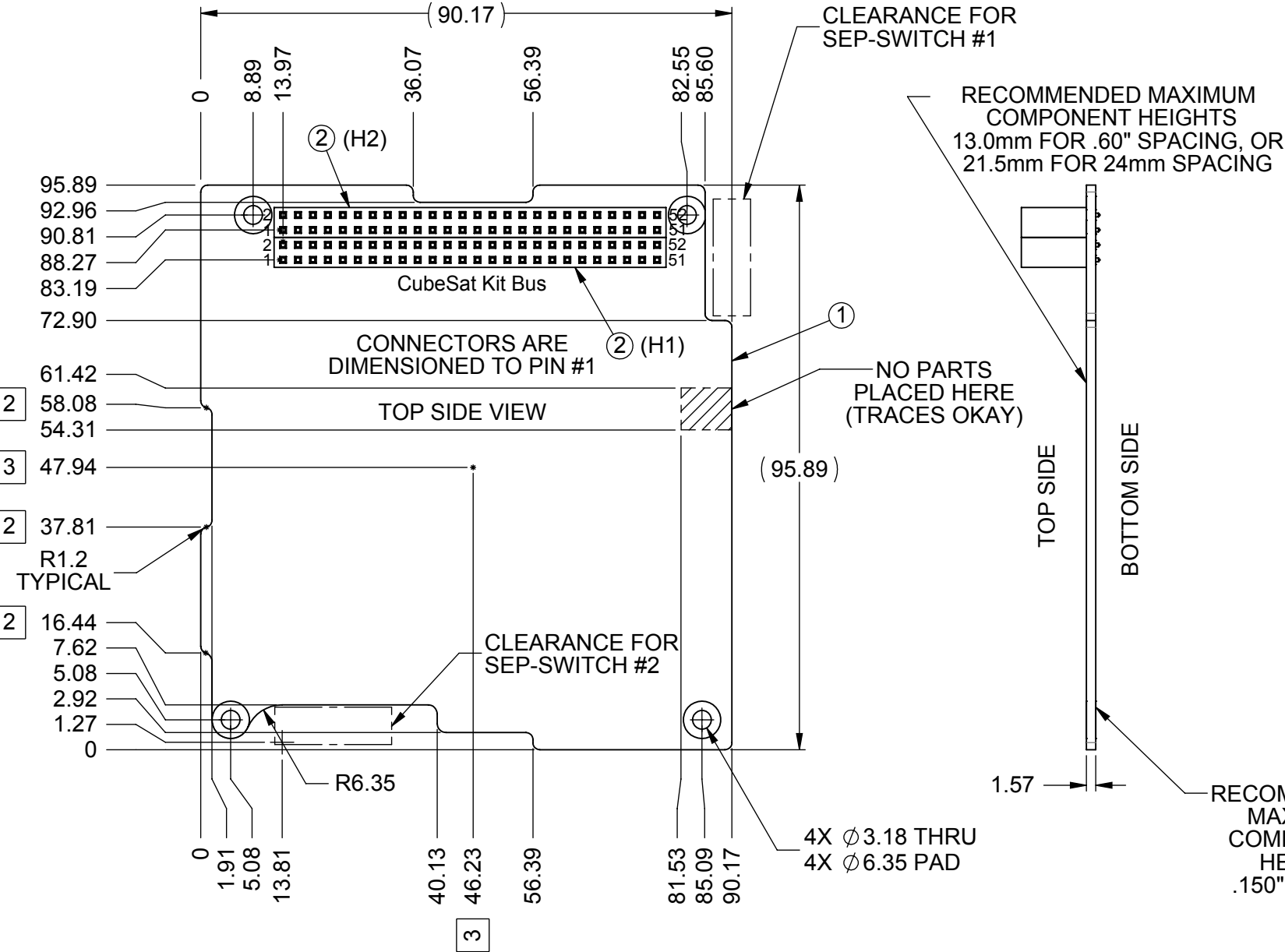
2 THIS DIMENSION IS TO THE TANGENCY/COINCIDENT OF CURVES WITH SAME RADIUS (.047") WHICH ARE TANGENT TO ADJACENT STRAIGHT EDGES.

3 DIMENSION CALLS OUT SATELLITE 100x100mm CENTER. THIS IS NOT THE SAME AS PCB CENTER.

MATERIAL:		FINISH:		HEAT TREAT:		WEIGHT:	
<div><div>PUMPKINTM</div><div>SCALE 1:1</div><div>INCORPORATED</div></div>				750 Naples - San Francisco - CA 94112 (415) 584-6360 ph - (415) 585-7948 fax info@pumpkininc.com			
UNLESS OTHERWISE SPECIFIED DIMENSIONS ARE IN INCHES TOLERANCES ARE: <u>FRACTIONS</u> <u>DECIMALS</u> <u>ANGLES</u> .X = ± .040 .XX = ± .020 ± 0° 30" .XXX = ± .010 CAD GENERATED DRAWING, DO NOT MANUALLY UPDATE		APPROVALS	DATE	TITLE Base "SLOT 0" PCB SPEC			
		DRAWN <i>AWR</i>	09/26/03				
		CHECKED <i>AWR</i>	08/20/18				
		QUAL ENG <i>AWR</i>	11/07/18	SIZE B	DWG.	810-00253	REV B2
DO NOT SCALE DRAWING		SCALE 1:1		SHEET 2 OF 6			

METRIC DRAWING

REVISION HISTORY				
REV	LOC	DESCRIPTION	DATE	APP'VD
		SEE SHEET #6		AWR

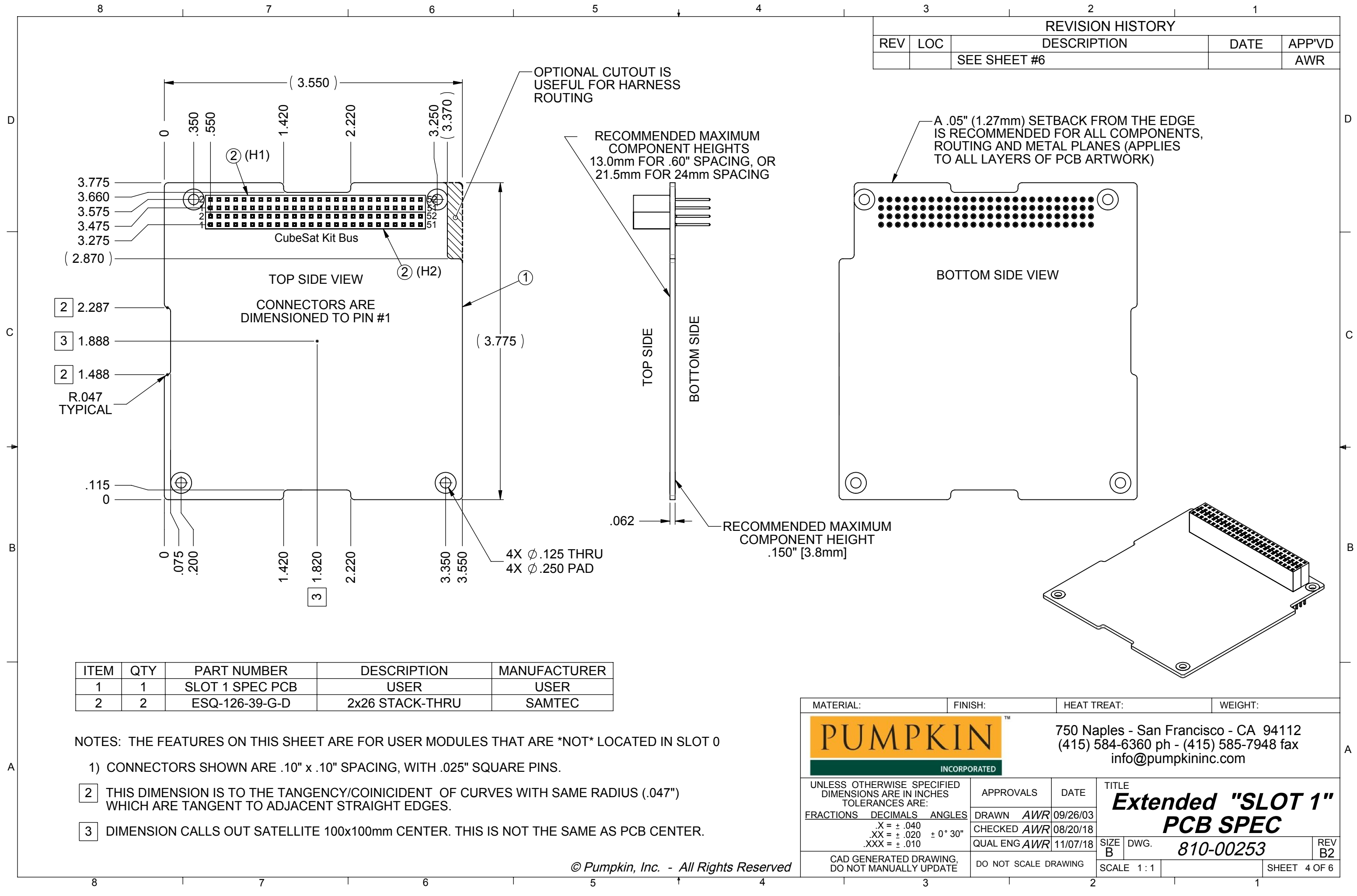


ITEM	QTY	PART NUMBER	DESCRIPTION	MANUFACTURER
1	1	SLOT 0 SPEC PCB	USER	USER
2	2	ESQ-126-37-G-D	2x26 NON-STACK-THRU	SAMTEC

NOTES: THE FEATURES ON THIS PAGE ARE FOR "SLOT 0" USER MODULES MOUNTED TO A PUMPKIN CubeSat Kit 2-SWITCH BASEPLATE ASSEMBLY.

- CONNECTORS SHOWN ARE .10" x .10" SPACING, WITH .025" SQUARE PINS.
- THIS DIMENSION IS TO THE TANGENCY/COINCIDENT OF CURVES WITH SAME RADIUS (.047") WHICH ARE TANGENT TO ADJACENT STRAIGHT EDGES.
- DIMENSION CALLS OUT SATELLITE 100x100mm CENTER. THIS IS NOT THE SAME AS PCB CENTER.

MATERIAL:		FINISH:		HEAT TREAT:		WEIGHT:		
<div><div>PUMPKINTM</div><div>SCALE 1:2</div><div>INCORPORATED</div></div>				750 Naples - San Francisco - CA 94112 (415) 584-6360 ph - (415) 585-7948 fax info@pumpkininc.com				
UNLESS OTHERWISE SPECIFIED DIMENSIONS ARE IN MILLIMETERS TOLERANCES ARE: FRACTIONS DECIMALS ANGLES X. = ± 1.0 .X = ± .50 ± 0° 30" .XX = ± .25 CAD GENERATED DRAWING, DO NOT MANUALLY UPDATE		APPROVALS		DATE		TITLE		
		DRAWN <i>AWR</i>		09/26/03		<i>Base "SLOT 0"</i> <i>PCB SPEC</i>		
		CHECKED <i>AWR</i>		08/20/18				
		QUAL ENG <i>AWR</i>		11/07/18		SIZE B	DWG. <i>810-00253</i>	REV B2
		DO NOT SCALE DRAWING		SCALE 1:1		SHEET 3 OF 6		



REVISION HISTORY				
REV	LOC	DESCRIPTION	DATE	APP'VD
		SEE SHEET #6		AWR

ITEM	QTY	PART NUMBER	DESCRIPTION	MANUFACTURER
1	1	SLOT 1 SPEC PCB	USER	USER
2	2	ESQ-126-39-G-D	2x26 STACK-THRU	SAMTEC

NOTES: THE FEATURES ON THIS SHEET ARE FOR USER MODULES THAT ARE *NOT* LOCATED IN SLOT 0

1) CONNECTORS SHOWN ARE .10" x .10" SPACING, WITH .025" SQUARE PINS.

2 THIS DIMENSION IS TO THE TANGENCY/COINCIDENT OF CURVES WITH SAME RADIUS (.047") WHICH ARE TANGENT TO ADJACENT STRAIGHT EDGES.

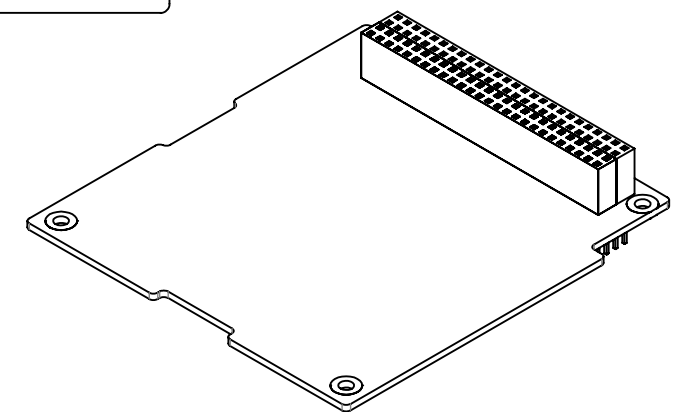
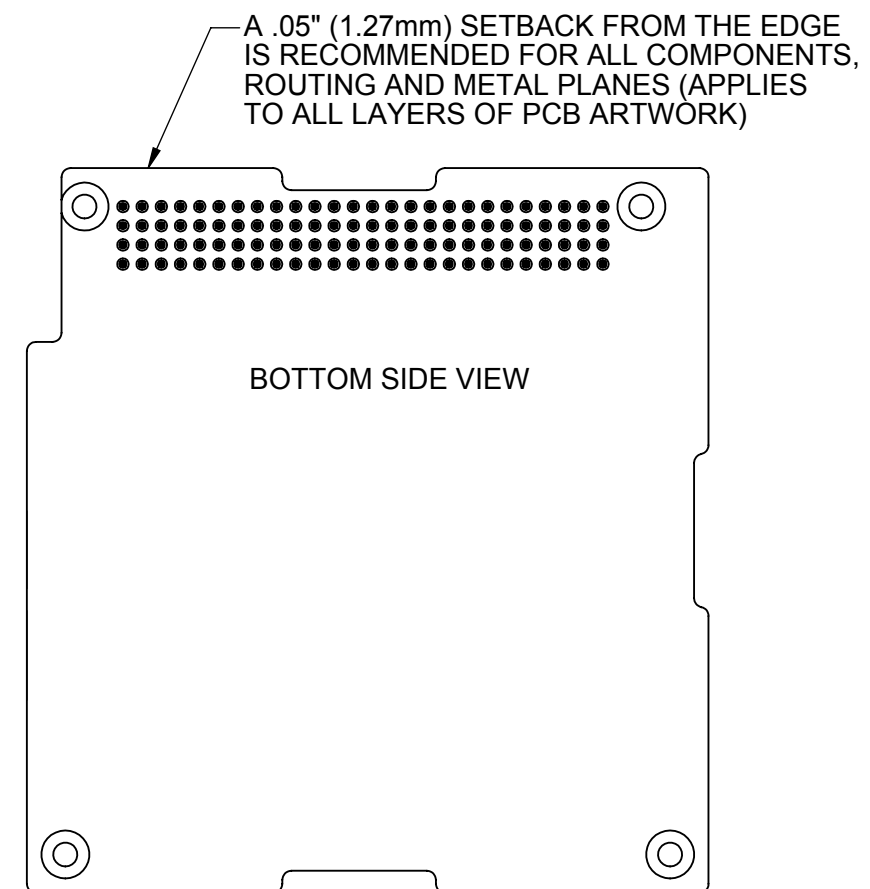
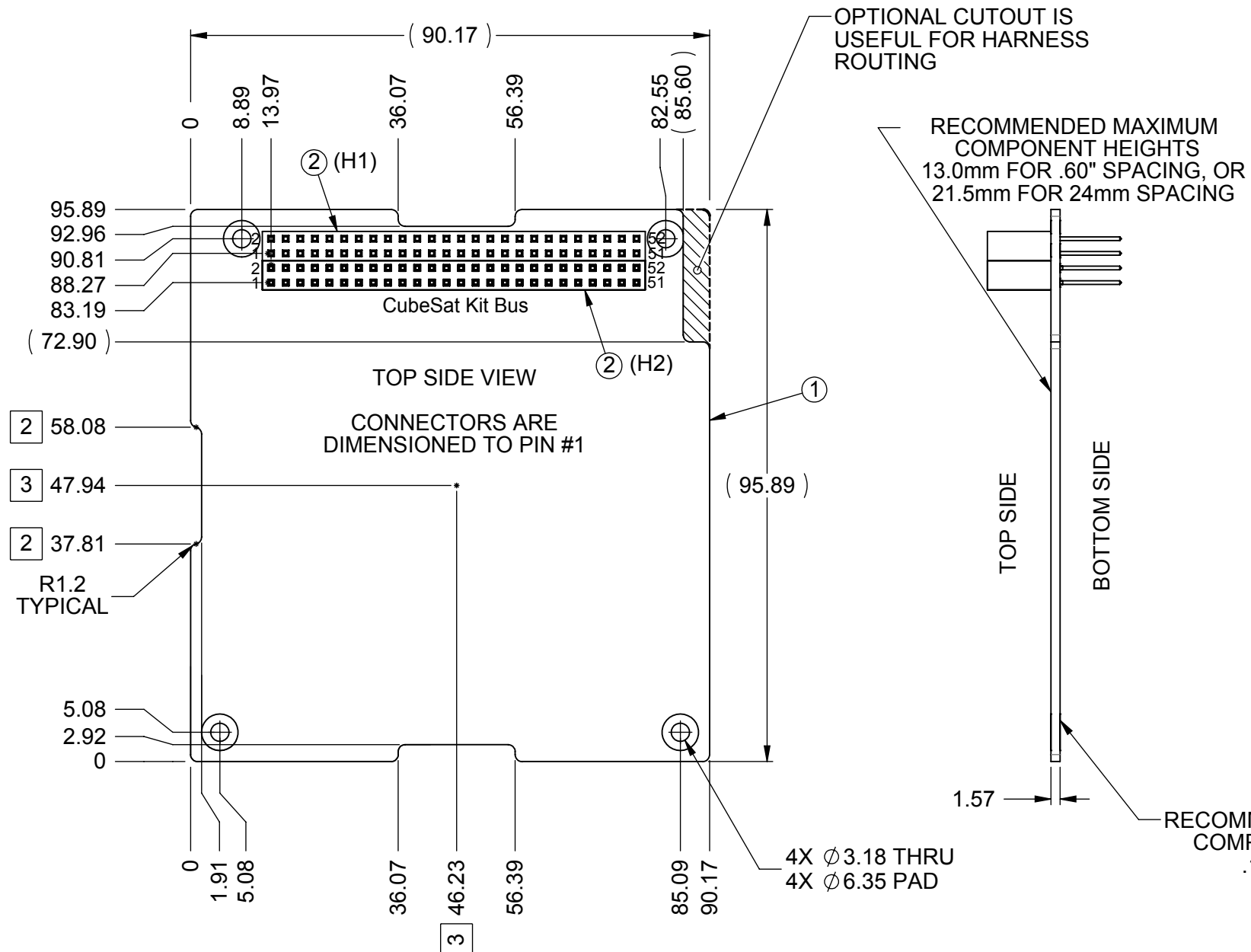
3 DIMENSION CALLS OUT SATELLITE 100x100mm CENTER. THIS IS NOT THE SAME AS PCB CENTER.

© Pumpkin, Inc. - All Rights Reserved

MATERIAL:		FINISH:		HEAT TREAT:		WEIGHT:	
<div><div>PUMPKINTM</div><div>INCORPORATED</div></div>				750 Naples - San Francisco - CA 94112 (415) 584-6360 ph - (415) 585-7948 fax info@pumpkininc.com			
UNLESS OTHERWISE SPECIFIED DIMENSIONS ARE IN INCHES TOLERANCES ARE: FRACTIONS DECIMALS ANGLES .X = ± .040 .XX = ± .020 ± 0° 30" .XXX = ± .010 CAD GENERATED DRAWING, DO NOT MANUALLY UPDATE		APPROVALS		DATE		TITLE Extended "SLOT 1" PCB SPEC	
		DRAWN <i>AWR</i>		09/26/03			
		CHECKED <i>AWR</i>		08/20/18			
		QUAL ENG <i>AWR</i>		11/07/18		SIZE B	DWG. 810-00253
		DO NOT SCALE DRAWING		SCALE 1 : 1		SHEET 4 OF 6	

METRIC DRAWING

REV	LOC	DESCRIPTION	DATE	APP'VD
		SEE SHEET #6		AWR




ITEM	QTY	PART NUMBER	DESCRIPTION	MANUFACTURER
1	1	SLOT 1 SPEC PCB	USER	USER
2	2	ESQ-126-39-G-D	2x26 STACK-THRU	SAMTEC

NOTES: THE FEATURES ON THIS SHEET ARE FOR USER MODULES THAT ARE *NOT* LOCATED IN SLOT 0

- 1) CONNECTORS SHOWN ARE .10" x .10" SPACING, WITH .025" SQUARE PINS.
- 2) THIS DIMENSION IS TO THE TANGENCY/COINCIDENT OF CURVES WITH SAME RADIUS (.047") WHICH ARE TANGENT TO ADJACENT STRAIGHT EDGES.
- 3) DIMENSION CALLS OUT SATELLITE 100x100mm CENTER. THIS IS NOT THE SAME AS PCB CENTER.

© Pumpkin, Inc. - All Rights Reserved

MATERIAL:		FINISH:		HEAT TREAT:		WEIGHT:	
				750 Naples - San Francisco - CA 94112 (415) 584-6360 ph - (415) 585-7948 fax info@pumpkininc.com			
UNLESS OTHERWISE SPECIFIED DIMENSIONS ARE IN MILLIMETERS TOLERANCES ARE: FRACTIONS DECIMALS ANGLES		APPROVALS DRAWN <i>AWR</i> CHECKED <i>AWR</i> QUAL ENG <i>AWR</i>		DATE 09/26/03 08/20/18 11/07/18		TITLE <i>Extended "SLOT 1" PCB SPEC</i> SIZE B DWG. <i>810-00253</i> REV B2	
X. = ± 1.0 .X = ± .50 ± 0° 30" .XX = ± .25		DO NOT SCALE DRAWING		SCALE 1 : 1		SHEET 5 OF 6	
CAD GENERATED DRAWING, DO NOT MANUALLY UPDATE							

REVISIONS					
REV	SHEET	LOC	DESCRIPTION	DATE	APP'VD
A1	2	C4	UPDATED LOCATION OF USB & POWER KEEP OUT ZONES	06/01/2004	AWR
A1	2	A8	ADDED NOTE #5	06/01/2004	AWR
A2	2	C7	ADDED CUTOUTS FOR EG SOLAR CONNECTOR	01/26/2006	AWR
A2	2	C7/D7	CHANGED H1 & H2 2x20 HEADERS TO 2x26	01/26/2006	AWR
A3	2	C6	ADDED CUTOUT NOTES FOR SWITCH	02/06/2006	AWR
A4	2	D8/D6	ADDED CORNER CUTOUTS - ADCS	03/20/2007	AWR
A4	2	B8/B6	ADDED CORNER CUTOUTS - ADCS	03/20/2007	AWR
A4	2	C8	ADDED R.047" OUTSIDE RADIUS NOTE	03/20/2007	AWR
A4	2	C6	ADDED .180" x .905" 1st SWITCH CUTOUT	03/20/2007	AWR
A4	2	C6	CHANGED DRAWING TITLE	03/20/2007	AWR
A4	3	--	ADDED METRIC DRAWING (SHEET #3)	03/20/2007	AWR
A5	2 & 3	--	ADDED NOTATIONS TO SHEET 2 & 3	06/19/2007	AWR
A6	4 & 5	--	CREATED SPECIFIC "SLOT 0" & "SLOT 1" (ADDED SHEETS 4 & 5)	07/26/2018	JMM
A6	2 & 3	B8	ADDED 2nd SWITCH CUTOUT	07/26/2018	JMM
B0	1	--	ADDED ASSEMBLY OVERVIEW SHEET (FOR SHEET 1 POSITION)	08/20/2018	AWR
B0	1,2,3,4,5		RE-ORGANIZED "SLOT 0" vs. "SLOT 1" REFERENCES	08/20/2018	AWR
B0	2 & 3	B2/B4	REMOVED REFERENCES TO USB/POWER/MHX RADIO KEEPOUTS	08/20/2010	AWR
B1	2,3,4,5	C7	ADDED SATELLITE 100x100mm CENTER	09/27/2018	JMM
B2	2 & 3	B3/D3	ADDED KEEPOUTS FOR WHERE PCB RESTS ON FLANGE	11/07/2018	AWR

ADDITIONAL NOTES REGARDING HISTORICAL CSK PCBs

CONTACT PUMPKIN DIRECTLY FOR INFORMATION REGARDING:

- A) LOCATION OF MOUNTING HOLES FOR RBF (REMOVE BEFORE FLIGHT) LEVER-ARM SWITCH ON "SLOT 0" BOARD
- B) LOCATION OF PPM (PLUGGABLE PROCESSOR MODULE) CONNECTOR
- C) LOCATION OF MHX RADIO INLINE CONNECTORS
- D) LOCATION OF PC104 CONNECTORS

MATERIAL:		FINISH:		HEAT TREAT:		WEIGHT:	
<div><div>PUMPKIN</div><div>INCORPORATED</div></div>				750 Naples - San Francisco - CA 94112 (415) 584-6360 ph - (415) 585-7948 fax info@pumpkininc.com			
		APPROVALS		DATE		TITLE CubeSat Kit PCB Specification	
		DRAWN <i>AWR</i>		09/26/03			
		CHECKED <i>AWR</i>		08/20/18			
		QUAL ENG <i>AWR</i>		11/07/18			
CAD GENERATED DRAWING, DO NOT MANUALLY UPDATE		DO NOT SCALE DRAWING		SIZE B	DWG.	810-00253	REV B2
				SCALE : NONE		SHEET 6 OF 6	